



CENTAURUS PRIME

Integrations, Custom Programming, Consulting



Trane-485 Gateway Guide

5 / 2006 VERSION 1.1

INTEGRATIONS, CUSTOM PROGRAMMING, AND CONSULTING

Trane-485 Gateway Guide

© 2005, 2006 by Centaurus Prime
4425 Cass Street • Suites B-C • San Diego, CA
Phone 858.270.4452 • Fax 858.270.7769

Table of Contents

Introduction	i		
C H A P T E R 1		“Devices” Menu Options	16
Gateway Installation, Basic Information	1	“Point” Menu Options	18
Summary	1	“Control” Menu Options	21
Single Board Computer Basics	2	“Watch” Menu Options	25
Connecting Power to the Gateway	3	Uploading and Downloading files to the	
Connecting Trane Trunks to the Gateway	3	Gateway	27
Connecting To the Modbus Master	4	Setting Up The Modbus Driver	29
Configuring the CS485	5	Setting Up The BACnet System	30
RS485 Communications	6		
RS422 Communications	7		
RS232 Communications	7	C H A P T E R 3	
Removing the CS485	8	Modbus & BACnet Point Mapping	31
Connecting to a BACnet/IP Network	8	Device Point Mapping for VAV-1’s and	
Gateway Overview and Identification	9	VariTrane Controllers	31
C H A P T E R 2		Index	33
Commissioning the Gateway with the			
Local user Interface	10		
Creating and Downloading the			
GATEWAY.INI file	11		
Creating and Downloading the			
SOCKET,CFG File	12		
Local Mode Menu Options	13		
Auto Discovery and Database Generation	13		
“Summary” Menu Options	15		


Gateway Installation

Basic Information

Summary

This section will help to give a basic overview and quick summary of the procedures needed to install the Trane-485 Gateway Panel. Detailed instructions are also provided later in this guide. The Centaurus Prime Trane-485 Gateway allows any front-end system (Modbus Master or BACnet/IP) that communicates using the either industry-standard Modbus or BACnet protocols to communicate to Trane VAV field equipment. The Trane VAV field devices will appear to the front-end system as a series of Modbus SLAVE devices or BACnet Devices. Each Trane-485 Controller will map to one of these devices. Real time point data from the Trane VAV controllers is then mapped to equivalent registers, coils, and bits on the Modbus system, or as AI, BI, AO, and BO objects on the BACnet system. All operations are transparent to the user and the host computer.

ICON KEY

 Valuable information

Connections to the Trane-485 Gateway are simple and clearly marked. They consist of:

- Power Supply, 120 Volts AC (optionally, 220 or 240 Volts AC)
- Trane-485 VAV Device trunks (up to four)
- Modbus-RTU Network, (RS-485 or IP), or BACnet/IP Network
- Local Mode Port for commissioning via Laptop Computer

All Hardware necessary to connect the Gateway to the Trane-485 devices is included in the 16" X 14" X 8" plastic cabinet that is easily mounted in a convenient location.



The BACnet/IP network is a 10-Mbaud Ethernet, only. The Modbus RTU Network connects to the Trane-485 Gateway via either (a) a 10-Mbaud Ethernet, (b) an RS-422 serial link (a four-wire, full-duplex connection), an RS-485 serial link (a two-wire, half-duplex connection), or an (c) RS-232 serial link (a three-wire, full-duplex connection). The RS485 or RS422 connections must be used in a multi-drop network

configuration.

Single Board Computer Basics

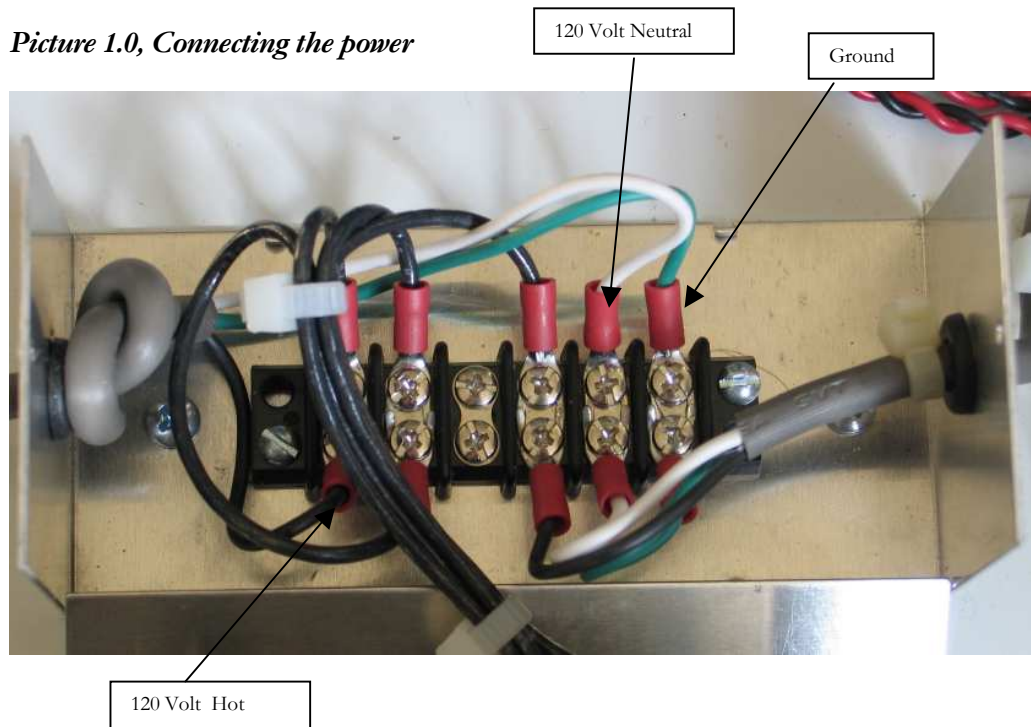
The Single Board Computer used in Centaurus Prime Gateways is the Ether 6 manufactured by JK Microsystems. It is made in the United States of America. The controller is based on an Intel 386Ex processor running at 25Mhz. It is equipped with 1 megabyte of static ram organized as 512K 16-bit words. Also included are 512K bytes of flash memory organized as DOS drives A and B. A 40 Megabyte M-Systems DiskOnChip is added to the 32-pin DIP socket on the controller board, and acts as drive C: There is a switching power converter on the controller, which can accept 7-34 volts DC. Nominal current consumption is 250mA at 12 volts with 10Base-T Ethernet selected.

Specifications for the Ether 6 are:

Processor :	Intel 386Ex, 25MHz
Operating System :	XDOS(MS/PC DOS 3.3 compatible)
Memory :	1M SRAM, 512K Flash, 40MB Flash
Ethernet :	10BASE-T, NE2000 compatible automatic media detection, Link status and Activity LEDs
Serial Port 1 :	RS-232 with 5 handshake lines COM1, address 0x3F8, IRQ4 115200 baud maximum
Serial Port 2 :	RS-232 no handshaking or RS-485 half duplex, COM2, address 0x2F8, IRQ 3 115200 baud maximum
Serial Port 3-6 :	RS-232 with handshake lines, 16554 UART, COM3-6 115200 baud maximum 16 byte Rx and Tx FIFO
Digital I/O :	5 Bits (P1.4-P1.7 & P3.1) Pin configurable as input or output 8mA souce/sink
Watchdog :	Hardware, 1.6 second timeout Generates board wide Reset
Clock/Calendar :	Hardware, battery backup
Supply Power :	7-34V unregulated DC $\pm 10\%$, 3 Watts
Humidity :	5 - 90%, non-condensing
Temperature :	-4 to +158 °F (-20 to +70 °C)
Weight :	53 oz (1.5 kg)
Dimensions :	8.30" x 6.76" x 2.28" (210.8mm x 171.7mm x 57.9mm)

Connecting Power to the Gateway

Power connections are made by removing the 2 screws on either side of the terminal block enclosure. Follow the diagram below for proper terminations.



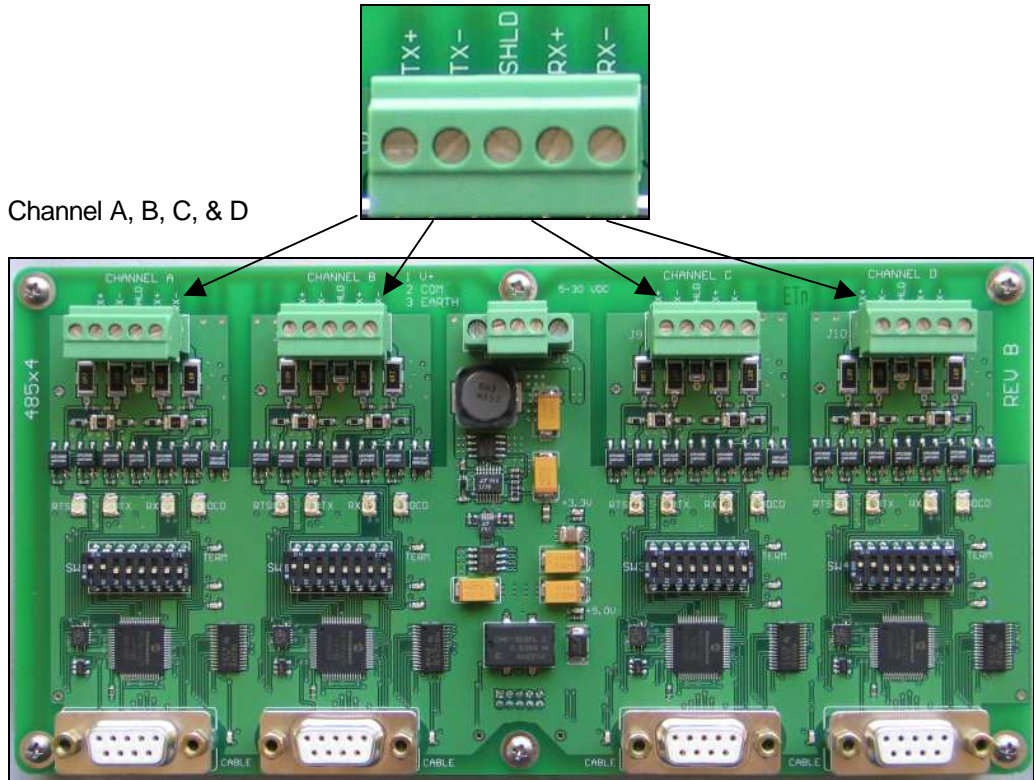
Connecting Trane VAV Trunks to the Gateway

Typically, Trane device trunks (possibly several trunks) are connected to a Trane BCU (“BACnet Control Unit), with various combinations of “Com1”, “Com2”, “Com3”, “Com4” and “Com5” trunks, each via a special card in the BCU. These are NOT to be confused with PC-based “Com” ports. The Trane “Com” trunks each use different technologies (e.g., Com5 is a Echelon LON trunk; Com 1 and Com3 are the same except Com1 is non-isolated and Com3 features voltage isolation). The RS-485 “Com” trunks from the Trane BCU are removed and simply re-connected to the Centaurus Prime Trane-485 Gateway.

The trunk connections are clearly marked and each trunk is only a two-wire connection. The trunks have a “plus” and “minus” side, and also a “shield” connection that goes to cabinet (AC) ground. Be sure that the polarity is correct, and that the shields are ALL tied together and only connected to ground at ONE place (to

avoid ground-loops). This is a two-wire trunk, so it does not matter if you land the field trunk wires on TX+/TX-, or on RX+/RX-. Just make sure the polarity is right!

Picture 1.2, Gateway Overview and Identification



Connecting to the Modbus Master

Connecting to the Modbus Master is done one of two ways:

(1) Ethernet:

If you have ordered the Trane-485 Gateway as the standard Modbus/IP configuration, then it is simple: You plug in an 8-pin Category 5 or Category 6 cable into the Ethernet connection on the top right-hand corner of the PCB. You must set the IP address of the Gateway to a static, fixed address, on the segment that you are in. This is done with the CONFIG.TXT file, described in the next chapter.

(2) Serial Link:

If you have ordered the Trane-485 Gateway with the Modbus/RTU protocol option, then the Modbus connection is made with the CS485 line driver included in the Gateway cabinet, if the product has been ordered with a Modbus-RTU front-end. The CS485 line driver is an RS-232 to RS-485 interface converter. It allows an RS-232

CENTAURUS PRIME

device to reliably transmit data over long distances (up to 4000 feet). The CS485 has many features not normally found in typical line drivers, and is intended for operation in harsh industrial environments.

You must also modify the GATEWAY.INI file to specify the baud rate and parity of the Modbus/RTU connection. All Centaurus Prime Gateways act as a series of Modbus slaves, and can be a large number of logical devices, but it acts as only one electrical device on the Modbus/RTU trunk. The Gateway can act at any baud rate from 4800 baud to 38400 baud (38400 baud is not recommended except for very short distances). Even, Odd, and None are the valid parity options.

The CS485 may be used in point-to-point applications as well as multi-drop applications using either 4-wire or 2-wire configurations. Up to 32 devices may be connected together on one communication line.

The CS485 has 1500-volt optical isolation between the RS-232 side and the RS-485 side. The RS-485 lines are protected with 2 stages of surge protection, and jumpers allow complete configuration of terminating and pull up/down functions.

Configuring the CS485

The full manual for the CS-485 is available on the Centaurus Prime web site (www.centaurusprime.com). While it is very lengthy and technical, we recommend that you download and review the full manual if you are using the Gateway in unusual applications (e.g., with radio modems, Ethernet converters, line-drivers with delays, etc.) The CS-485 allows for many options, and a unique “data mode” that no other RS-485 converter on the market has. It is extremely robust and adaptable.

The CS485's default configuration is for 2-wire RS485. Following are setup parameters for RS485 (2 wire), RS422 (4 wire), and optionally, RS232:

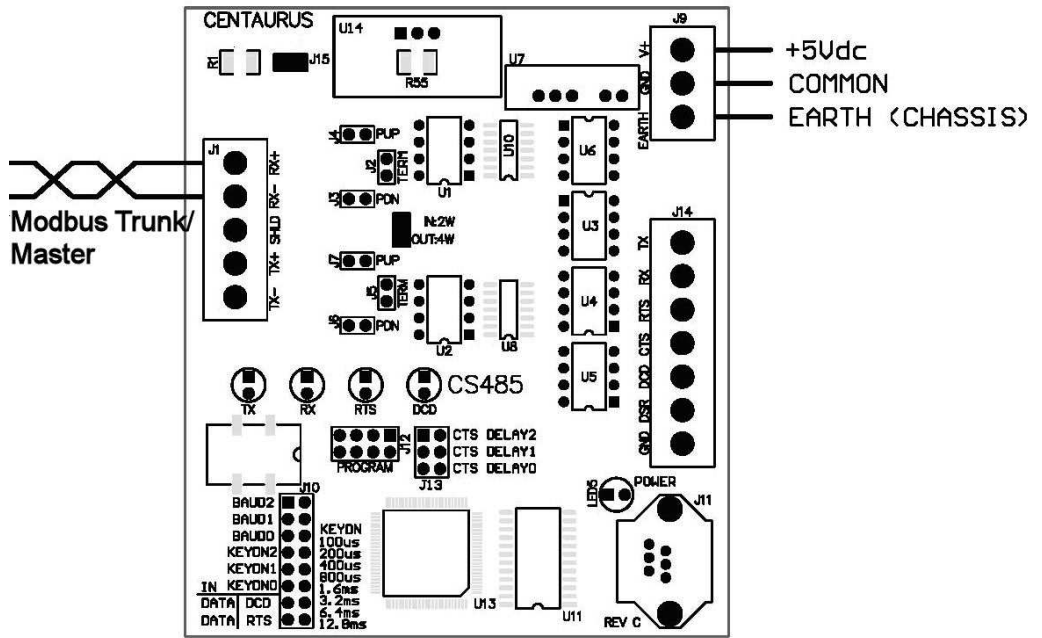
RS-485 RX and TX Jumpers

- J4 – Enable pull-up resistor for RX+ line
- J3 – Enable pull-down resistor for RX- line
- J2 – Terminate RX pair with 120-ohm resistor
- J7 – Enable pull-up resistor for the TX+ line
- J6 – Enable pull-down resistor for the TX- line
- J5 – Terminate TX pair with 120-ohm resistor
- J8 IN Enables 2-wire operation for both RX and TX pairs
 (Dual port operation)

CENTAURUS PRIME

OUT	Enables 4-wire operation RX is receive pair TX is transmit pair
J15	Connects isolated RS-485 common to bleed resistor and filter cap

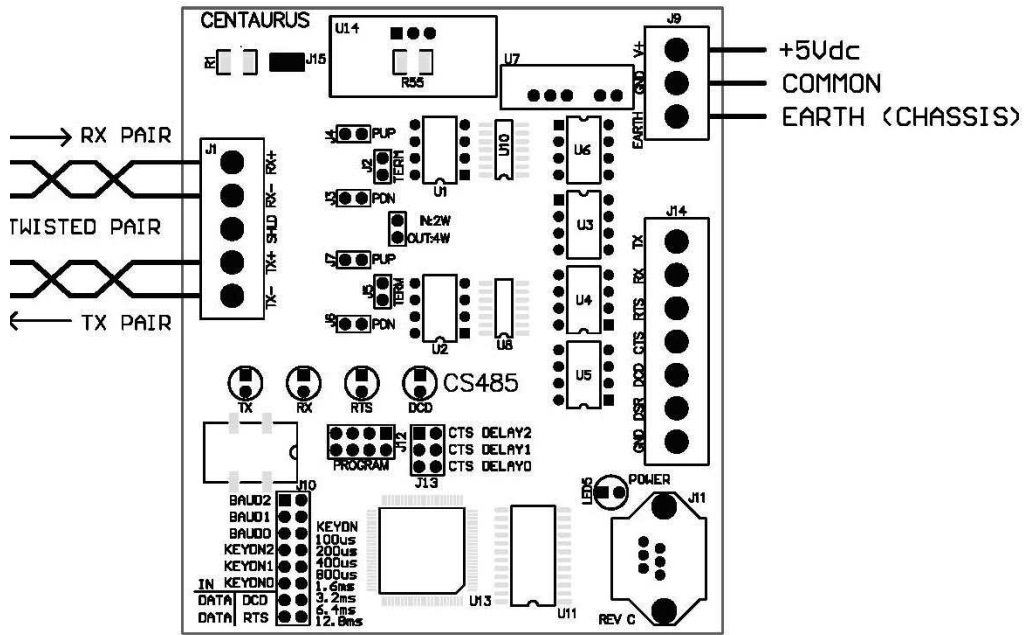
RS485 Communications



Installed jumpers: 2W/4W, Baud0, Baud1, Data DCD, Data RTS, J2 (end of line only), J3 (end of line only), J4 (end of line only), and J15 (static bleed)

CENTAURUS PRIME

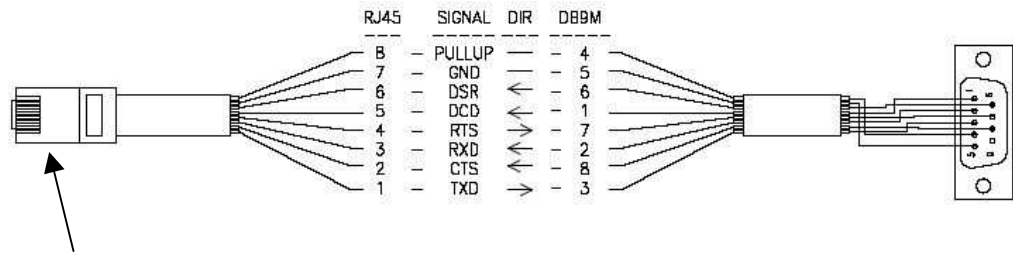
RS422 Communications

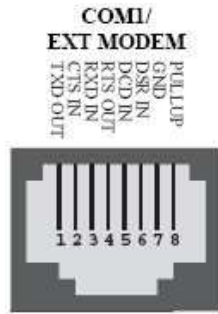


Installed jumpers: Baud0, Baud1, Data DCD, Data RTS, J2 (end of line only), J3 (end of line only), J4 (end of line only), J5 (end of line only), J7 (end of line only), and J15 (static bleed)

RS232 Communications

For RS232 communications, you will need to make a cable that will connect to Comm1 (RJ45) on the Single board Computer following the diagram below:





NOTE about removing the CS-485:

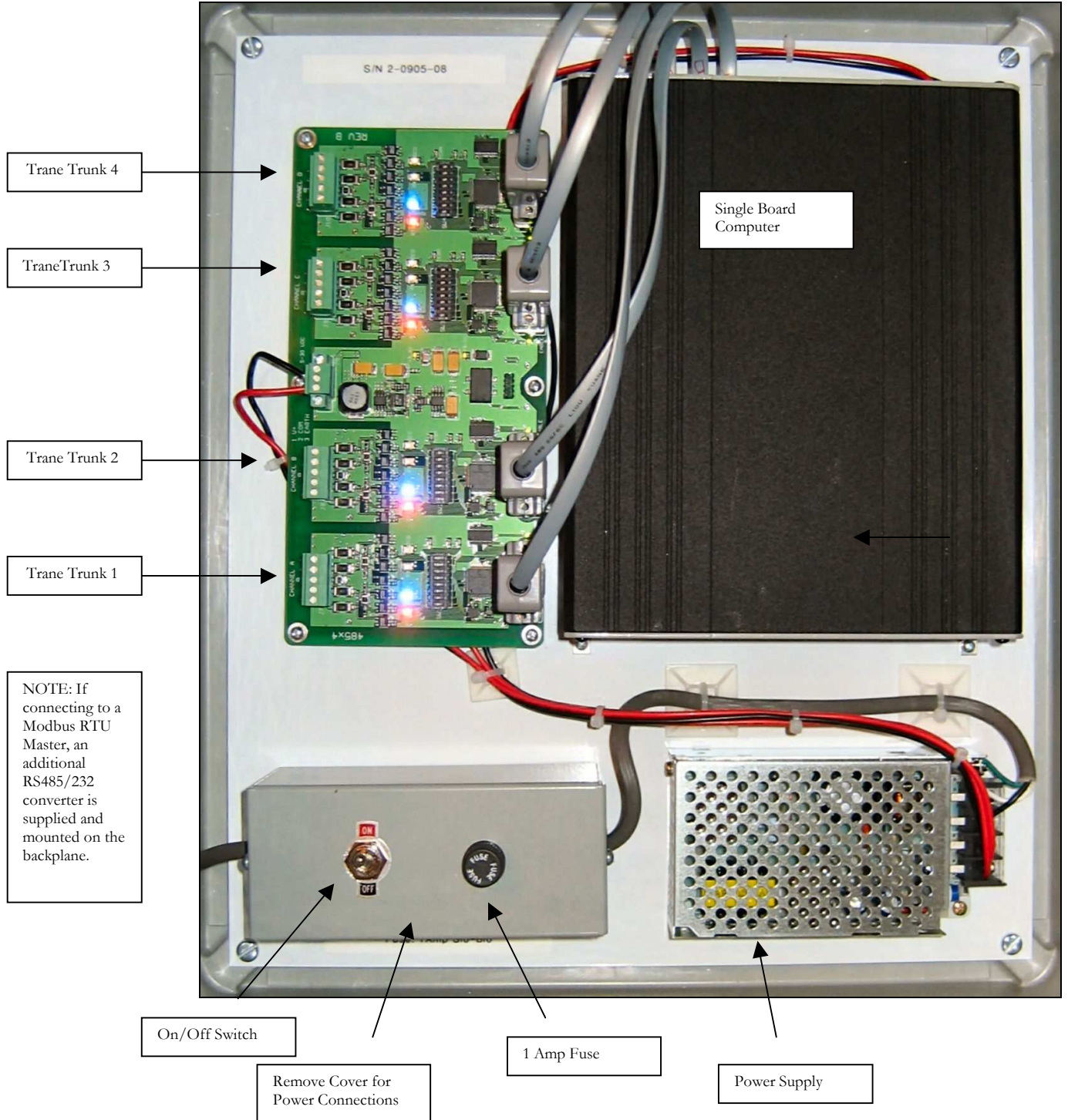
For RS-232 or Ethernet applications, the CS-485 module is not used, and may be removed. While many are tempted to do this (it can be used in other applications, of course), we recommend that you remove the wiring that powers the CS-485 also, if you do. Both the National Electrical Code and local electrical code (generally) do not approve of either “wire nuts” or electrical tape on exposed wires. As the Gateways are built to UL and CSA standards, we suggest you adhere to these standards, to avoid code issues.

Connecting to a BACnet/IP Network

This is quite simple: You plug in an 8-pin Category 5 or Category 6 cable into the Ethernet connection on the top right-hand corner of the PC. You must set the IP address of the Gateway to a static, fixed address, on the segment that you are in. This is done with the CONFIG.TXT file, described in the following section.

Gateway Overview

Picture 1.3, Gateway Overview and Identification



Commissioning the Gateway with the Local User Interface

Creating and Downloading the GATEWAY.INI file

The following is an example of the GATEWAY.INI file that must be edited to match your particular installation. There are several sets of parameters in the INI file. One set of parameters deals with the BAUD rates on the four Trane trunks. Another parameter sets the Ethernet IP Address of the gateway (it must be a FIXED IP address!), if you are using either Modbus/TCP or BACnet/IP as the host protocol. And, if you are using BACnet, another set of parameters tells the gateway about several network options of BACnet.

The “BAUD0, 9600,N” line may be modified for different Baud rates and parity for your Modbus/RTU connection. The valid baud rates you can use are only:

4800, 9600, 19200

The parity specification should only be “N”, “O”, or “E”. This will set the Parity to **N**one, **O**dd, or **E**ven, if you are using the Modbus RTU protocol. If you are using Modbus/IP or BACnet/IP, then the “BAUD0” line is irrelevant.

The lines for BAUD1, BAUD2, BAUD3, and BAUD4 must be set for the respective Device baud rates which will be “1200” or “9600” (depending up whether you have older VAV or newer ones, respectively). If you have unused trunks, then the baud rate should be set to “0” as seen in the example below for BAUD3 and BAUD4. See “Uploading and Downloading files to the Gateway” for information on accomplishing the upload/download procedures.

The line for IP_ADDR is required only if you have the Ethernet in use (i.e., Modbus/TCP or BACnet/IP protocols in operation). You have to set up the FIXED IP Address of this gateway computer in two places: here in the GATEWAY.INI file, and also in the SOCKET.CFG file (more on that later). But just be aware that they

MUST match! If the SOCKET.CFG specifies a different IP address from the GATEWAY.INI file, you will never receive anything from the Gateway!

For the BACnet/IP (Annex J) protocol, a couple other global parameters are necessary. Internally the gateway maps devices in a very simple fashion: Devices 1 through 60 on trunk 1; Devices 61 through 120 on trunk 2, Devices 121 through 180 on trunk 3, and Devices 181 through 240 on trunk 4. But you might not want to use those as your Device “Instance numbers”, if you have some other addressing scheme (or a number of these gateways) on a system. The BACNET_OFFSET allows you to have these devices show up as a different set of Instances rather than just 1 to 240. The number that you specify is added to the internal device number. Hence, if your offset is 5000, and you are interested in (local) device #84 (the fourth gizmo on trunk #2), the BACnet system sees this device as Instance # 5084.

Also, if you have multiple gateways on one system, you will need to have each of them be a different Network Number (set via the BACNET_NETWORK parameter in the Gateway.ini file). This is so that there is no confusion between the devices on one gateway and any others (they all could have local device numbers be the same; by having different Network Numbers for each gateway, they become unique, as far as the underlying BACnet protocol works).

```
C:\>type gateway.ini
// "BAUD0" is used for the HOST CHANNEL Baud Rate (the Modbus RTU
// Protocol) and Parity settings N=None, O=Odd, E=Even
//
BAUD0, 9600,N
//
// -----
//
// Required for 4 ports: Set the baud rate (set to 0 if channel unused)
//
// Valid baud rates are: 1200 – older, VAV-1 devices
//                       9600 – newer VAV devices (III, IV, V, etc.)
//                       0 -- <means that nothing is on that trunk>
BAUD1, 1200
BAUD2, 9600
BAUD3, 9600
BAUD4, 0
//
// -----
//
// “IP_ADDR” is used for the IP address of what you want this box to be.
// ( And it MUST match the SOCKET.CFG IP Address! )
//
IP_ADDR, 192.168.0.204
```

```
// -----
//
// "BACNET_NETWORK" is used for what BACnet network number we are on
//
BACNET_NETWORK, 1042
//
// "BACNET_OFFSET" is what we will add to the local device numbers (1..240)
// to yield the BACnet object_ID instances of each mapped BACnet "device"
//
BACNET_OFFSET, 1042000
//
```

Creating and Downloading the SOCKET.CFG file

The following is an example of the SOCKET.CFG file that must be edited to match your particular installation, if you are using the Modbus/TCP or BACnet/IP protocols. If you are not doing an Ethernet connection, this text file is irrelevant, and can be ignored and left as it comes from the factory.

ONLY ONE LINE SHOULD BE CHANGED—the line that begins with “ip address”. Here is an example:

```
C:\>type socket.cfg
# SOCKET.CFG is the configuration file to be executed by SOCKETP.EXE

ip address 192.168.0.72

interface pdr if0 dix 1500 10 0x60
# The following line will just display the info for easy verification:
ip address
# The following lines set TCP/IP parameters (commented out in this case):
#ip ttl 15
#tcp mss 1460
#tcp window 2920
```

The “ip address 192.168.0.72” line should be modified to be whatever *static* IP address that the Trane-485 Gateway will have. Note that DHCP is not an option; this device requires a static, fixed, IP address.

Local Mode Menu Options

Once connected via the local mode port you may press <enter> at any time to display this top level menu:

```
(H)elp, (S)ummary, (D)evice, (P)oint, (C)ontrol, (W)atch, (A)utoDisc, (X)-it
```

When you type "H" <enter> you will get the following:

```
Hit a single key to get to a submenu. Your Options are:
```

```
  H (for Help),  which gives you this screen.
  S (for Summary), which allows you to get various status summaries.
  D (for Devices), which allows you to manage and get data on devices.
  P (for Points), which allows you to manage and get data on points.
  C (for Control), which allows you to control various field objects.
  W (for Watch),  which allows you to watch protocol streams.
  A (for AutoDisc), which allows you to auto-discover trunks.
  X (for "X-it"), which exits this gateway program.
```

```
(H)elp, (S)ummary, (D)evice, (P)oint, (C)ontrol, (W)atch, (A)utoDisc, (X)-it :
```

 *X – will always take you back to the top level menu options*

Auto Discovery and Database Generation

Before you can use any of the other menu options you must first create your database by using the (A) option, which will give you the following text:

```
AUT: (A)uto-Discovery, (S)ave Discovery, (X)-it :A
```

```
AUTODISCOVERY: You may select a TRUNK to auto-discover.
  Enter a TRUNK NUMBER (1 through 4) : 1
```

```
Trunk #1 will now be auto-discovered...
```

```
AUT: (A)uto-Discovery, (S)ave Discovery, (X)-it :
```

```
State: "AutoDiscovery" on Trunk: 1, VAV Device #1
```

```
State: "AutoDiscovery" on Trunk: 1, VAV Device #2
```

```
State: "AutoDiscovery" on Trunk: 1, VAV Device #3
```

```
State: "AutoDiscovery" on Trunk: 1, VAV Device #4
```

```
VAV-1 # 4 Discovered on Trunk #1
```

State: "AutoDiscovery" on Trunk: 1, VAV Device #5

State: "AutoDiscovery" on Trunk: 1, VAV Device #6

State: "AutoDiscovery" on Trunk: 1, VAV Device #7

When Auto Discover is invoked the Gateway will scan for all VAV device addresses possible on the requested trunk.

As you can see in the example above, Trane-485 Device address #4 was discovered, which was a VAV-1 type device.

This process should be completed for all trunks that have Trane-485 devices. When all trunks have been Auto Discovered, you can then use the (S)ave Discovery option.

📁 Note 1: This is a lengthy process, taking 5-10 minutes per trunk on a 1200-baud trunk (older VAV-1s; a bit quicker with the newer 9600-baud VariTrane devices)

📁 Note 2: If a controller is dead, unplugged, or not communicating when Auto-Discover is done, you can manually add the controller to the discovered data file. You must download the data file to your PC, edit it to add a line about the missing controller, and then upload the modified file back into the Gateway. **See “Uploading and Downloading files to the Gateway”**

📁 Files that are in the Gateway on drive C:, and their purpose, are:

- STARTUP .BAT - Startup Batch file
- GATEWAY.INI - Sets all baud rates, IP Address, BACnet parameters
- SOCKET.CFG - IP Configuration file
- SOCKETP .EXE - TCP/IP Socket stack
- NE2000.COM - Ethernet Driver
- TRN_GWAY.EXE - Does all the magic
- DATABASE.DAT - Database that is created from Save Discovery
- DISC_1 .TXT - Trunk #1 Auto Disc File
- DISC_2 .TXT - Trunk #2 Auto Disc File
- DISC_3 .TXT - Trunk #3 Auto Disc File
- DISC_4 .TXT - Trunk #4 Auto Disc File
- CONFIG .TXT - Device configuration file created when the Auto-Discovery files are merged
- XPING.EXE - Test program to verify Ethernet connectivity

(H)elp, (S)ummary, (D)evice, (P)oint, (C)ontrol, (W)atch, (A)utoDisc, (X)-it :A

AUT: (A)uto-Discovery, (S)ave Discovery, (X)-it :S

AUTODISCOVERY: You may SAVE and MERGE all trunk auto-discovery maps.
ARE YOU SURE? If so, enter "Y" for YES; and then the ENTER key.
(or any other keys if you do NOT want to merge the maps :Y

Discovery File Merging, trunk #1
Merging, VAV unit #4; Trunk #1; Type = 1
Discovery File Merging, trunk #2
Discovery File Merging, trunk #3
Merging, VAV unit #4; Trunk #3; Type = 0
Merging, VAV unit #6; Trunk #3; Type = 0
Discovery File Merging, trunk #4
Merging, VAV unit #1; Trunk #4; Type = 1
Merging, VAV unit #2; Trunk #4; Type = 1

This option will merge all of the discovery files for each trunk thereby giving you a completed database for the Trane VAV devices on all trunks.

After the merge is complete, the Gateway will have created a file called DATABASE.DAT. When the Gateway is rebooted, the new Database file will be initialized and communications to the field devices will commence.

The Save Discovery option automatically assigns Modbus device numbers (slave addresses) to the Trane VAV devices it found. First, devices on trunk #1 are assigned, in order of Modbus slave devices 1 through 60 (note that there are a maximum of 60 Trane VAV's for one trunk – this is because many installations violated the “rules” about only having 32 Trane VAV's on one trunk. We accommodate systems that have more). Similarly, the Trane VAV devices found on Trunk #2 are assigned (in the order that they are discovered) to Modbus slave devices 61 through 120. And of course, Modbus slave addresses 121 to 180 are for the Trane devices found on Trunk #3, and finally Modbus slave addresses 181 to 240 are assigned to devices on Trunk #4 (in order of discovery).

“Summary” Menu Options

SUM: (D)evices, (A)larms, (C)ontrolled, (U)nreliable, (X)-it :

After the (S)ave Discovery has been completed, you can then reboot and the Gateway will begin to poll the discovered devices. The summary menu option will display further options detailed below.

(D)evices : Devices will display all the status of all devices configured for the Gateway.

SUM: (D)evices, (A)larms, (C)ontrolled, (U)nreliable, (X)-it :D

CENTAURUS PRIME

```
TagID: "VAV#4, TRUNK 1 (MB #1)" is ON-LINE & RELIABLE
TagID: "VAV #1, TRUNK 2 (MB #61)" is OFF-LINE! <MUST INIT> (SlowScan)
TagID: "VAV #4, TRUNK 3 (MB #121)" is ON-LINE & RELIABLE
TagID: "VAV #5, TRUNK 3 (MB #122)" is ON-LINE & RELIABLE
TagID: "VAV #6, TRUNK 3 (MB #123)" is ON-LINE & RELIABLE
```

(A)larms: Not available with Modbus (does not support alarm states). With BACnet, this does have meaning, but only for points that have alarm states or limits (intrinsic alarms) defined. At the present time, the Centaurus Prime gateways do NOT support BACnet alarming, either “intrinsic” or “algorithmic”.

(C)ontrolled: This command will display all controlled points for all Modbus or BACnet devices.

```
SUM: (D)evices, (A)larms, (C)ontrolled, (U)nreliable, (X)-it :C
```

```
DEVICE #1 is field device/subdevice/type 4/0/1
*** Gateway has NO controls to do! ***
DEVICE #61 is field device/subdevice/type 4/0/1
*** Gateway has NO controls to do! ***
DEVICE #121 is field device/subdevice/type 4/0/1
*** Gateway has NO controls to do! ***
DEVICE #122 is field device/subdevice/type 5/0/0
*** Gateway has NO controls to do! ***
DEVICE #123 is field device/subdevice/type 6/0/0
*** Gateway has NO controls to do! ***
```

(U)nreliable: This will display all unreliable points for all devices.

```
SUM: (D)evices, (A)larms, (C)ontrolled, (U)nreliable, (X)-it :U
```

```
DEVICE #1 is field device/subdevice/type 4/0/1
*** "PO #7 Action" is UNRELIABLE
*** "PO #6 Action" is UNRELIABLE
*** "COOLING Control" is UNRELIABLE
*** "HEATING Control" is UNRELIABLE
```

“Devices” Menu Options

The Devices menu is used to display all of the configured devices (A) or to “target” a specific device and get data about it.

CENTAURUS PRIME

(A)ll: View all configured devices.

```
DEV: (S)elect, (A)ll, (D)etail, (O)ff-line, (C)omm Stats, (X)-it :A
TagID: "VAV #4, TRUNK 1 (MB #1)" is ON-LINE & RELIABLE
TagID: "VAV #4, TRUNK 2 (MB #61)" is OFF-LINE! <MUST INIT> (SlowScan)
TagID: "VAV #4, TRUNK 3 (MB #121)" is ON-LINE & RELIABLE
TagID: "VAV #5, TRUNK 3 (MB #122)" is ON-LINE & RELIABLE
TagID: "VAV #6, TRUNK 3 (MB #123)" is ON-LINE & RELIABLE
```

(S)elect: Target a specific device.

```
DEV: (S)elect, (A)ll, (D)etail, (O)ff-line, (C)omm Stats, (X)-it :S
DEV: You may select a DEVICE to target into.
      Enter a DEVICE number (1..240 or 0 for all): 2
Device #2 is now the targeted device.
```

(D)etail: Will display the following details of selected device.

```
DEV: (S)elect, (A)ll, (D)etail, (O)ff-line, (C)omm Stats, (X)-it :D
DEVICE #1 is field device/subdevice/type 4/0/1
Device Name: VAV #4, Insurance Company
Device Description: West Conference Room VAV
TagID: "VAV #4, TRUNK 1 (MB #1)" is ON-LINE & RELIABLE
I/O Trunk: 1, had last COMM at 17:13:12 on Dec 28, 2004
Scan time (secs): 14. Device has 54 objects under it. First link =54
```

(O)ffline: This will display the Offline status of devices. Hopefully none are, but if any are, they will be displayed in a list.

```
DEV: (S)elect, (A)ll, (D)etail, (O)ff-line, (C)omm Stats, (X)-it :O
TagID: "VAV #4, TRUNK 2 (MB #61)" is OFF-LINE!
```

(C)omm Stats: This will display communication statistics of the selected device.

```
DEV: (S)elect, (A)ll, (D)etail, (O)ff-line, (C)omm Stats, (X)-it :C
```

TagID: "VAV #4, TRUNK 1 (MB #1)" statistics:

Packets Today: 463

RX Errors Today: 0 % Error: 0.000

TX Errors Today: 4 % Error: 0.864

Last Comm at: 17:13:26 on Dec 28, 2002

“Point” Menu Options

The “Point” menu has three options, Select, All, and Detail.

PNT: (S)elect, (A)ll, (D)etail, (X)-it :

(A)ll: This will display all points and their current values for the targeted device. What follows below is an example from a Modbus gateway. A BACnet gateway will display the BACnet object type and Instance number in the first part of each line, rather than the Modbus register number). Data is the same for both gateway “flavors”, it is just the object mapping which is different in the two protocol systems (register addresses versus object type/instances).

PNT: (S)elect, (A)ll, (D)etail, (X)-it :A

DEVICE #1 is field device/subdevice/type 4/0/1

TagID: "VAV #4, TRUNK 1 (MB #1)", has 54 objects under it, 1st one at: 54

MB Reg 30001	(AI)	"Zone Temperature	"	Fld: 72 ==>	72.00
MB Reg 30002	(AI)	"Active Heating SPT Used	"	Fld: 71 ==>	71.00
MB Reg 30003	(AI)	"Active Cooling SPT Used	"	Fld: 76 ==>	76.00
MB Reg 30004	(AI)	"Occupied Heating SPT Val"	Fld: 71 ==>	71.00	
MB Reg 30005	(AI)	"Occupied Cooling SPT Val"	Fld: 76 ==>	76.00	
MB Reg 30006	(AI)	"UnOccupied Heat SPT Val"	Fld: 67 ==>	67.00	
MB Reg 30007	(AI)	"UnOccupied Cool SPT Val"	Fld: 80 ==>	80.00	
MB Reg 30008	(AI)	"Damper/Valve Pos	"	Fld: 24 ==>	24.00
MB Reg 30009	(AI)	"Maximum Flow Size	"	Fld: 16 ==>	1100.00
MB Reg 30010	(AI)	"Present CFM Flow	"	Fld: 0 ==>	0.00
MB Reg 30011	(AI)	"Max Heating Flow	"	Fld: 16 ==>	16.00
MB Reg 30012	(AI)	Min Heating Flow	"	Fld: 15 ==>	15.00
MB Reg 30013	(AI)	"Max Cooling Flow	"	Fld: 90 ==>	90.00
MB Reg 30014	(AI)	"Min Cooling Flow	"	Fld: 90 ==>	90.00
MB Reg 30015	(AI)	"Fan Ctl Offset Value	"	Fld: 90 ==>	90.00
MB Reg 30016	(AI)	"AUX Temperature	"	Fld: 74 ==>	74.00
MB Reg 10001	(DI)	"Current Fan Status	"	Fld: 0 OFF (0-state)	
MB Reg 10002	(DI)	"Control Mode Status	"	Fld: 0 COOL (0-state)	
MB Reg 10003	(DI)	"Heating Status	"	Fld: 0 OFF (0-state)	
MB Reg 10010	(DI)	"Damper Forced Open	"	Fld: 0 NORMAL (0-state)	

CENTAURUS PRIME

MB Reg	10011	(DI)	"Damper Forced Closed	"	Fld:	0	NORMAL	(0-state)
MB Reg	10012	(DI)	"OCC/UNOCC Mode Ctl	"	Fld:	0	OCCUPIED	(0-state)
MB Reg	10013	(DI)	"Local SPT Status	"	Fld:	16	DISABLED	(1-state)
MB Reg	10014	(DI)	"Min Setpoint Forced	"	Fld:	0	NORMAL	(0-state)
MB Reg	10015	(DI)	"Max Setpoint Forced	"	Fld:	0	NORMAL	(0-state)
MB Reg	10016	(DI)	"Temp/Flow Mode FB	"	Fld:	64	TEMP	(1-state)
MB Reg	40004	(AO)	"Occupied Heating SPT	"	Fld:	71 ==>	71.00	
MB Reg	40005	(AO)	"Occupied Cooling SPT	"	Fld:	76 ==>	76.00	
MB Reg	40006	(AO)	"UnOccupied Heating SPT"		Fld:	67 ==>	67.00	
MB Reg	40007	(AO)	"UnOccupied Cooling SPT"		Fld:	80 ==>	80.00	
MB Reg	40011	(AO)	"Max Heating Flow SPT	"	Fld:	16 ==>	16.00	
MB Reg	40012	(AO)	"Min Heating Flow SPT	"	Fld:	15 ==>	15.00	
MB Reg	40013	(AO)	"Max Cooling Flow SPT	"	Fld:	90 ==>	90.00	
MB Reg	40014	(AO)	"Min Cooling Flow SPT	"	Fld:	25 ==>	25.00	
MB Reg	40015	(AO)	"Fan Ctl Offset SPT	"	Fld:	3 ==>	3.00	
MB Reg:	10	(DO)	"Damper Forced Open CTL"		Fld:	0	OFF	(0-state)
MB Reg:	11	(DO)	"Damper Forced Close CTL"		Fld:	0	OFF	(0-state)
MB Reg:	12	(DO)	"OCC/UNOCC Mode CTL"		Fld:	0	OCCUPIED	(0-state)
MB Reg:	13	(DO)	"Local SPT Control	"	Fld:	16	DISABLED	(1-state)
MB Reg:	14	(DO)	"Min Setpoint Forced	"	Fld:	0	NORMAL	(0-state)
MB Reg:	15	(DO)	"Max Setpoint Forced	"	Fld:	0	NORMAL	(0-state)
MB Reg:	16	(DO)	"Temp/Flow Mode CTL	"	Fld:	0	TEMP	(0-state)
MB Reg:	17	(DO)	"Recalibration CTL	"	Fld:	0	OFF	(0-state)

The display is slightly different for the BACnet flavor of this gateway, because BACnet uses Object Type/Instances rather than registers. The order is slightly different, but the data is identical. Here is the same display, in "BACyap" format:

```
PNT: (S)elect, (A)ll, (D)etail, (X)-it :A

DEVICE #1 is field device/subdevice/type 4/0/1
  TagID: "VAV #4, TRUNK 1 (Dev #1)", has 54 objects under it, 1st one at: 54
BACnet ID  1 (AI)  "Zone Temperature      " Fld: 72 ==> 72.00
BACnet ID  2 (AI)  "Active Heating SPT Used " Fld: 71 ==> 71.00
BACnet ID  3 (AI)  "Active Cooling SPT Used " Fld: 76 ==> 76.00
BACnet ID 104 (AO) "Occupied Heating SPT   " Fld: 71 ==> 71.00
BACnet ID  4 (AI)  "Occupied Heating SPT Val" Fld: 71 ==> 71.00
BACnet ID 105 (AO) "Occupied Cooling SPT   " Fld: 76 ==> 76.00
BACnet ID  5 (AI)  "Occupied Cooling SPT Val" Fld: 76 ==> 76.00
BACnet ID 106 (AO) "UnOccupied Heating SPT" Fld: 67 ==> 67.00
BACnet ID  6 (AI)  "UnOccupied Heat SPT Val" Fld: 67 ==> 67.00
BACnet ID 107 (AO) "UnOccupied Cooling SPT" Fld: 80 ==> 80.00
BACnet ID  7 (AI)  "UnOccupied Cool SPT Val" Fld: 80 ==> 80.00
```

CENTAURUS PRIME

BACnet ID	8 (AI)	"Damper/Valve Pos	" Fld: 24 ==>	24.00
BACnet ID	9 (AI)	"Maximum Flow Size	" Fld: 16 ==>	1100.00
BACnet ID	10 (AI)	"Present CFM Flow	" Fld: 0 ==>	0.00
BACnet ID	111 (AO)	"Max Heating Flow SPT	" Fld: 16 ==>	16.00
BACnet ID	11 (AI)	"Max Heating Flow	" Fld: 16 ==>	16.00
BACnet ID	112 (AO)	"Min Heating Flow SPT	" Fld: 15 ==>	15.00
BACnet ID	12 (AI)	"Min Heating Flow	" Fld: 15 ==>	15.00
BACnet ID	113 (AO)	"Max Cooling Flow SPT	" Fld: 90 ==>	90.00
BACnet ID	13 (AI)	"Max Cooling Flow	" Fld: 90 ==>	90.00
BACnet ID	114 (AO)	"Min Cooling Flow SPT	" Fld: 25 ==>	25.00
BACnet ID	14 (AI)	"Min Cooling Flow	" Fld: 90 ==>	90.00
BACnet ID	115 (AO)	"Fan Ctl Offset SPT	" Fld: 3 ==>	3.00
BACnet ID	15 (AI)	"Fan Ctl Offset Value	" Fld: 90 ==>	90.00
BACnet ID	16 (AI)	"AUX Temperature	" Fld: 73 ==>	73.00
BACnet ID	201 (AV)	"Analog Value 1 (User)	" Fld: 22 ==>	22.00
BACnet ID	202 (AV)	"Analog Value 2 (User)	" Fld: 10 ==>	10.00
BACnet ID	203 (AV)	"K-Packets TX/RX Today"	Fld: 27 ==>	27.00
BACnet ID	204 (AV)	"TX Error Rate	" Fld: 1 ==>	.51
BACnet ID	205 (AV)	"RX Error Rate	" Fld: 0 ==>	0.00
BACnet ID	301 (DI)	"Current Fan Status	" Fld: 0 OFF (0-state)	
BACnet ID	302 (DI)	"Control Mode Status	" Fld: 0 COOL (0-state)	
BACnet ID	303 (DI)	"Heating Status	" Fld: 0 OFF (0-state)	
BACnet ID	410 (DO)	"Damper Forced Open CTL"	Fld: 0 OFF (0-state)	
BACnet ID	310 (DI)	"Damper Forced Open	" Fld: 0 NORMAL (0-state)	
BACnet ID	411 (DO)	"Damper Forced Close CTL"	Fld: 0 OFF (0-state)	
BACnet ID	311 (DI)	"Damper Forced Closed	" Fld: 0 NORMAL (0-state)	
BACnet ID	412 (DO)	"OCC/UNOCC Mode CTL"	Fld: 0 OCCUPIED (0-state)	
BACnet ID	312 (DI)	"OCC/UNOCC Mode Ctl	" Fld: 0 OCCUPIED (0-state)	
BACnet ID	413 (DO)	"Local SPT Control	" Fld: 16 DISABLED (1-state)	
BACnet ID	313 (DI)	"Local SPT Status	" Fld: 16 DISABLED (1-state)	
BACnet ID	414 (DO)	"Min Setpoint Forced	" Fld: 0 NORMAL (0-state)	
BACnet ID	314 (DI)	"Min Setpoint Forced	" Fld: 0 NORMAL (0-state)	
BACnet ID	415 (DO)	"Max Setpoint Forced	" Fld: 0 NORMAL (0-state)	
BACnet ID	315 (DI)	"Max Setpoint Forced	" Fld: 0 NORMAL (0-state)	
BACnet ID	416 (DO)	"Temp/Flow Mode CTL	" Fld: 0 TEMP (0-state)	
BACnet ID	316 (DI)	"Temp/Flow Mode FB	" Fld: 0 TEMP (0-state)	
BACnet ID	417 (DO)	"Recalibration CTL	" Fld: 0 OFF (0-state)	
BACnet ID	317 (DI)	"Recalibration Status	" Fld: 0 OFF (0-state)	

(S)elect: With Select, you can target a specific point for the Device that you have targeted using the "Devices" menu.

PNT: (S)elect, (A)ll, (D)etail, (X)-it :S

PNT: You may select an OBJECT ID to target into.
Enter a valid, existing, Object ID (1 to 49999) : 30001

The object at ID #30001 is now selected.

(D)etail: will display details associated with the selected point, for MODBUS points:

PNT: (S)elect, (A)ll, (D)etail, (X)-it :ID

MB Address: 30001, Type = AI, "Zone Temperature"
Field Unit / Subunit : 4 / 0 Field Address :30001
Object Flags / Errors : 0 / 0
Field In / Out Counts : 0 / 0 Field Value : 0.000
Field Lo / Hi Range : 0.000 / 255.000
Eng. Units : Deg F.

(D)etail: will display details associated with the selected point, for BACnet points, in a format like this:

PNT: (S)elect, (A)ll, (D)etail, (X)-it :ID

BACnet Object ID = 12, Type = AI
Object Name: "Conf Room Zone Temp"
Object Description: "West wall temp sensor, 1st floor Conf. Room"
Field Unit / Subunit : 4 / 0 Field Address :30001
Object Flags / Errors : 0 / 0
Field In / Out Counts : 0 / 0 Field Value : 0.000
Field Lo / Hi Range : 0.000 / 255.000
Eng. Units : Deg F.

“Control” Menu Options

This is slightly different for Modbus and BACnet. In BACnet, you control things at sixteen different priority levels, and you can “release” control from any particular level.

Let’s consider the simpler, Modbus case first. Control just “happens” when you select a point and give it a new value. No priorities at all. The last control to a point “wins”, and stays until some other control is given to that point.

CENTAURUS PRIME

Now, before you can control a point object you must first have selected a device number and point number (see Modbus point map, Chapter 3).

(S)elect: Use this to select a valid point. Here is the Modbus variant:

```
CTL: (S)elect, (C)ontrol, (D)etail, (X)-it :S  
  
CTL: You may select an OBJECT ID to target into.  
Enter a valid, existing, Object ID (0 to 49999) : 11  
  
The object at ID #1 is now selected.
```

And, here is the BACnet variation on the same theme:

```
CTL: (S)elect, (P)riority, (C)ontrol, (R)elease, (D)etail, (X)-it :S  
  
CTL: You may select an OBJECT ID to target into.  
Enter a valid, existing, BACnet Object TYPE/ID (0 to 4), (1 to 16000): 1,114  
  
The object with Type 1 and Instance #114 is now selected.
```

(C)ontrol: (MODBUS version). This option will let you control the selected point. Here is a simple MODBUS example of a digital point control to “off” (zero):

```
CTL: (S)elect, (C)ontrol, (D)etail, (X)-it :C  
  
CTL: You may enter a new value to set the selected object to.  
Enter a field value (0 or 1 for digitals; valid number for analogs) : 0  
  
The new value of the object will be : 0  
Adding to Control Queue, at #2. MB #1, Register: 1  
Queued Control; Trunk #1, MB #1, Register: 1 -- to: 0.000
```

OK...so much for simple. Now let’s talk about BACnet (alias BADnet). There are sixteen priorities. These are given below:

Priority	BACnet Default	Comments
1	Manual Life-Safety	Trane: User-Emergency
2	Automatic Life-Safety	Trane: Critical! (Programmatic; no mins)
3	Miscellaneous	Trane: “Minimum on/off”
4	Miscellaneous	Trane: “User-High”
5	Critical Equipment Control	Trane: Custom Programming—High

6	Minimum On/Off	Trane: Miscellaneous
7	Custom Programming—High	Trane: Demand Limiting
8	Manual Operator	Trane: Miscellaneous
9	VAV Air Systems	Trane: VAV Air Systems
10	Chiller Plant Control	Trane: Chiller Plant Control
11	Area Control	Trane: Area Control
12	Manual Operator—Low	Trane: User-Low
13	Miscellaneous	Trane: Miscellaneous
14	Timed-Override	Trane: Timed-Override
15	Time-of-Day Scheduling	Trane: Time-of-Day Scheduling
16	Custom Programming—Low	Trane: Custom Programming—Low
N/A	Relinquish Default	Relinquish Default

Note in the “Comments” we have given what the Tracer Summit “Default” was for the priorities in question. This is informational only, but might help some of you who were used to an old Tracer system.

Each controllable point in BACnet (that is, an AO or a BO) has a “priority array” which is generally sparsely populated. Nothing in a particular priority level is specified by “Null”, which means that priority level is unused.

As an example, consider a warehouse exhaust fan which is turned on and off by a time schedule at priority 15. In a demand-limiting situation, this point may also have control at priority 7 (shut down ancillary systems in energy peak situations). But programmatically, a logic block that detects a fire might want to override everything and keep the fan on in order to pressurize an area and keep the fire from spreading, so that might be at priority 2. When control is “released” from the higher levels, the next lowest control is issued. Hence, after the fire is over, the fan that was overridden ON might go OFF from its priority 7 demand-limiting shutdown. But if that priority 7 control had been released, then the control descends to the priority 15 time-schedule control. You have to know what your plant’s priority system is, and what each point’s capabilities and control options are—this is not a trivial control philosophy!

The “Relinquish Default” value, if any is specified, is the control that is given out to a point if there is NOTHING in this priority array (that is, all 16 levels of control have been released). If there is no “Relinquish Default” value, then the point just sits there, at it’s last control.

Now, before you can control a point object you must first have selected a device number, a point type/instance, and a priority. Then you can set the control value, and that value will go into the object’s priority-array. That does NOT mean that control will be issued, remember, since you may be at a lower priority level than what is controlling the point right now.

CENTAURUS PRIME

(P)riority: (BACnet ONLY) Use this to select the priority that you will issue subsequent control and release operations at.

CTL: (S)elect, (P)riority, (C)ontrol, (R)elease, (D)etail, (X)-it :P

PRI: Enter a PRIORITY to do your controls at (1 to 16): 4

Control and Release Operations will now be done at Priority 4.

(C)ontrol: (BACnet version) This option will let you control the selected point, at whatever priority level you are currently at.

CTL: (S)elect, (P)riority, (C)ontrol, (R)elease, (D)etail, (X)-it :C

CTL: You may enter a new value to set the selected object to.

Enter a field value (0 or 1 for digitals; valid number for analogs) : 70

The new value of the object will be : 0

Adding to Control Queue, at #2. Device #6, AO #114

Queued Control; Trunk #1, Device #6, AO #114 -- to: 70.000 pri = 4

(R)elease: This option will let you release control for the selected point at your selected priority level (valid for the BACnet variant of the Gateway, only!):

CTL: (S)elect, (P)riority, (C)ontrol, (R)elease, (D)etail, (X)-it :R

RLS: Are you sure that you want to RELEASE this object?

ARE YOU SURE? If so, enter Y for Yes, and then the ENTER key.

(or any other keys if you do NOT want to RELEASE the object) : Y

The object AO #114 has been released from Priority #4.

(D)etail: will display details associated with the selected point.. Let's first look at a Modbus version of an object's detail:

CTL: (S)elect, (P)riority, (C)ontrol, (R)elease, (D)etail, (X)-it :D

MB Address: 30001, Type = AI, "Zone Temperature"

Field Unit / Subunit : 4 / 0 Field Address :30001

Object Flags (bits) : 0 Error Counter :0

```
Field In / Out Counts : 0 / 0 Field Value : 0.000  
Field Hi / Lo Range : 255.000 / 0.000 Eng. Units : Deg F.
```

And this is what is displayed for an example BACnet controllable object that has been released from all controls (note the line that says “No elements in priority/control array”):

```
CTL: (S)elect, (P)riority, (C)ontrol, (R)elease, (D)etail, (X)-it :D
```

```
BACnet Obj_ID 113, Type = AO, “Max Cooling Flow SPT”  
No elements in priority/control array  
Field Unit / Subunit : 4 / 0 Field Address :30001  
Object Flags / Errors : 0 / 0  
Field In / Out Counts : 0 / 0 Field Value : 0.000  
Field Hi / Lo Range : 10000.000 / 0.000  
Engineering Units : Percent
```

Had any priorities have controls in them, it would have displayed the priority and the control value, for EACH priority level.

SPECIAL NOTE FOR BO point #14 (Recalibration):

This point is, according to Trane, the “recalibration” point for a VAV box. It is pathetically slow in acting. The Trane manual errata sheet says that you must control the point ON for five minutes, then turn it OFF. The actual feedback from the point does show ON, but only for about 20 seconds, so the feedback is fairly useless (and, in fact, we suggest that you NOT define it!). However, the Trane documentation also says that it takes up to 15 minutes to drive the damper full closed to do the calibrations. It has been found that in real life, it takes sometimes 20 to 25 minutes to actually do the physical damper motion and recalibration. Have patience!

“Watch” Menu Options

The “Watch” menu will let you select various methods for monitoring the real time data from the field.

(Q)uiet: Use the (Q) key to halt any of the following monitoring options.

(1),(2),(3),(4) to Watch Trunks: Enter a Trane VAV trunk to monitor. This will display the field scan of all Trunk devices and the status of their points in real time. What is displayed below is the Modbus variant (it shows the register numbers in the second column); the BACnet variation is the same except it shows the BACnet object instances in the second column:

CENTAURUS PRIME

WCH: (Q)uiet, (1),(2),(3),(4) to watch trunks; (V)erbose, (M)odbus, (X)-it :1

*** TRUNK 1 is now being MONITORED ***

```
-- SCAN: Trunk #1, TRANE #4 Device # 1 Type: 0
AI 30001 Zone Temperature Counts: 72 = 72.00
AI 30002 Active Heating SP Used Counts: 71 = 71.00
AI 30003 Active Cooling SP Used Counts: 76 = 76.00
AI 30003 Active Cooling SP Used Counts: 76 = 76.00
AO 40004 OCCUPIED Heating SPT Counts: 71 = 71.00
AI 30004 OCC Heating Value Counts: 71 = 71.00
AO 40005 OCCUPIED Cooling SPT Counts: 76 = 76.00
AI 30005 OCC Cooling Value Counts: 76 = 76.00
AO 40006 UNOCCUPIED Heating SPT Counts: 67 = 67.00
AI 30006 UNOCC Heating Value Counts: 67 = 67.00
AO 40007 UNOCCUPIED Cooling SPT Counts: 80 = 80.00
AI 30007 UNOCC Cooling Value Counts: 80 = 80.00
AI 30008 Damper/Valve Pos Counts: 24 = 24.00
AI 30009 Maximum Flow (Size) Counts: 16 = 1100.00
AI 30010 Present CFM Flow Counts: 0 = 0.00
AO 40011 Max Heating Flow SPT Counts: 16 = 16.00
AI 30011 Max Heating Flow Counts: 16 = 16.00
AO 40012 Min Heating Flow SPT Counts: 15 = 15.00
AI 30012 Min Heating Flow Counts: 15 = 15.00
AO 40013 Max Cooling Flow SPT Counts: 90 = 90.00
AI 30013 Max Cooling Flow Counts: 90 = 90.00
AO 40014 Min Cooling Flow SPT Counts: 25 = 25.00
AI 30014 Min Cooling Flow Counts: 90 = 90.00
AO 40015 Fan Ctl Offset SPT Counts: 3 = 3.00
AI 30015 Fan Ctl Offset Value Counts: 3 = 3.00
DI 10001 Current Fan Status Raw Value: 8 ==> OFF
DI 10002 Control Mode Status Raw Value: 0 ==> COOL
DI 10003 Heating Status Raw Value: 8 ==> OFF
DO 10 Damper Force Open CTL Raw Value: 0 ==> NORMAL
...etc...
```

(V)erbose: When (V) is pressed while in monitor mode, the full protocol data packets will be displayed as well for each scanned device.

```
*** Now in VERBOSE MODE (full packets) for monitored trunks
-- SCAN: Trunk #1, TRANE #4 Device # 1 Type: 0
--TO Trunk 1: 00 04 01 00 1C AA 3D
-- Set up TIMEOUT, Trunk #1, to be 6153193, TMO @baud = 100
--FRM Trunk 1: <Incomplete>
TIMEOUT" on Trunk: 1, error count = 0
--TO Trunk 1: 00 04 01 00 1C AA 3D
--FRM Trunk 1:00 84 01 00 1C 08 00 11 01 1C 00 00 00 18 00 19 47 4C
47 4C
19 5A 0F 03 43 50 00 00 10 40 AA AA 3D 85 0F <Valid>
AI 30001 Zone Temperature Counts: 72 = 72.00
AI 30002 Active Heating SP Used Counts: 71 = 71.00
AI 30003 Active Cooling SP Used Counts: 76 = 76.00
```

CENTAURUS PRIME

```
AI 30003 Active Cooling SP Used Counts: 76 = 76.00
AO 40004 OCCUPIED Heating SPT Counts: 71 = 71.00
AI 30004 OCC Heating Value Counts: 71 = 71.00
AO 40005 OCCUPIED Cooling SPT Counts: 76 = 76.00
AI 30005 OCC Cooling Value Counts: 76 = 76.00
...etc...
```

(M)odbus: When (M) is pressed while in monitor mode, the full Modbus RTU data packets will be displayed as well for each scanned device (Modbus version only).

(B)ACnet: When (B) is pressed while in monitor mode, the full BACnet protocol data packets (addressed globally or to this gateway only) will be displayed in real-time. Note that this significantly slows down the BACnet channel, and we recommend that this mode NOT be utilized for any length of time.

Uploading and Downloading files to the Gateway

In order to upload/download files to the Gateway, you will need to use a VT-100 Terminal emulator (Hyperterminal or the like). You will need to set it up to use a Comm Port (Comm1 typically) and use the following settings: Baud=9600, Databits=8, Stop bits=1, Parity=None, and no Flow Control.

The Gateway has two utilities for transferring files. UP.COM is used to send files to the Gateway and DOWN.COM is used to received files from the gateway.

When you are connected to the gateway in local mode, hit X-it once or twice and you will be asked to type "YES" to quit the program which will take you to DOS prompt.

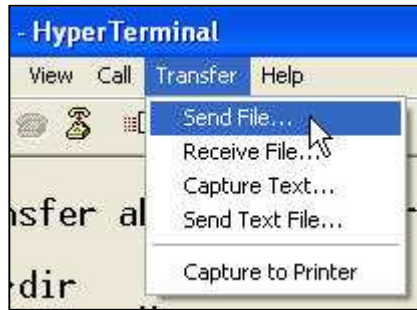
Sending a file to the Gateway (uploading)

From the dos prompt, you must type "UP filename" (filename being the name of the file to send with extension). The response will look like the following.

```
C:\>up test.txt
Ready, start X-modem upload now,
Press CNTRL-C to abort...
.....
```

In Hyperterminal, start the file transfer by selecting Transfer/Send and follow the following sequence below.

Click Transfer > Send File: Browse for file to send and make sure that Xmodem is selected. Click the send button and the file will be sent to the Gateway.

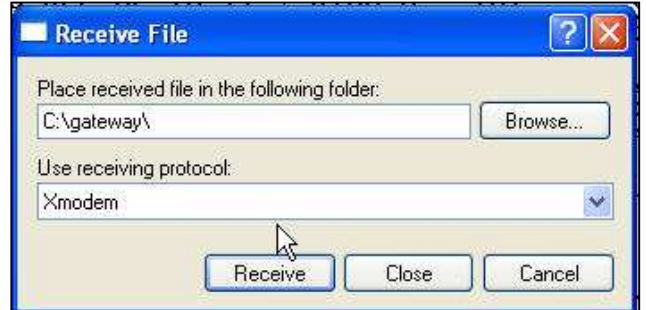
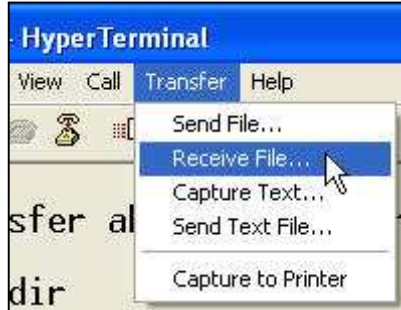


Receiving a file from the Gateway (downloading)

From the dos prompt, you must type “DOWN filename” (filename being the name of the file to receive with extension). The response will look like the following.

```
C:\>down disc_1.txt  
Ready, start X-modem download now...
```

In Hyperterminal, start the file transfer by selecting Transfer/Send and follow the following sequence below.



Click Transfer > Receive File: Enter the location to save the file and make sure that Xmodem is selected and then click the Receive button. The next dialog box will ask you to specify a filename and when you click "OK" the file will be received from the Gateway.

Setting up the Modbus Driver

After the Gateway is ready to go and you have your database configured, one of the last steps is to make sure that you have the Modbus driver settings for the Host/Master setup correctly. The following information should be kept in mind when configuring the driver

Modbus commands that are accepted by the Gateway are:

- 1 - Read Coils (0000's)
- 2 - Read Discretes (10000's)
- 3 - Read Holding Registers (40000's)
- 4 - Read Input Registers (30000's)
- 5 - Force Single Coil
- 6 - Preset Single Register
- 7 - Read Exception Status (Status is 0 if OK; o/w internal error-code)
- 15 - Force Multiple Coils
- 16 - Preset Multiple Registers
- 17 - Report Slave ID (Emulates Modicon Micro-84)

Most Modbus drivers have many setup options and each vendor is different. Following are some limits with the Modbus Gateway that you need to consider when setting up your driver.

MAXIMUM number of coils read at once (CMD #1) is 64
MAXIMUM number of discretes read at once (CMD #2) is 64
MAXIMUM number of holding registers read at once (CMD #3) is 32
MAXIMUM number of input registers read at once (CMD #4) is 32
MAXIMUM number of coils forced at once (CMD #15) is 8
MAXIMUM number of registers preset at once (CMD #16) is 8

TIMEOUT for a command should be a minimum of 350 milliseconds
(500 ms recommended)

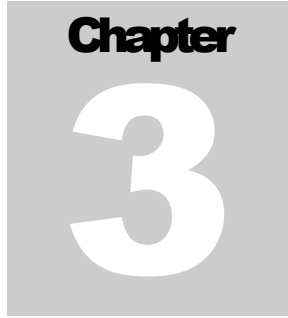
TIME BETWEEN commands should be a minimum of 50 milliseconds
(100 ms recommended)

NUMBER OF TIMEOUTS before "slow polling" should be a minimum of 3 (3 recommended)

Setting up the BACnet System

After the Gateway is ready to go and you have your database configured, one of the most important steps is to make sure that you have your BACnet system configured properly to communicate with the Centaurus Prime Gateway.

The most important parameter that some BACnet systems need to know is whether a device supports READ-MULTIPLE and WRITE-MULTIPLE services. The Centaurus Prime Gateways only support READ-MULTIPLE, not WRITE-MULTIPLE services. All Centaurus Prime Gateways conform to the BACnet “PICS” statement published and available on our web site, www.CentaurusPrime.com.



Modbus & BACnet Point Mapping

Device Point Mapping for VAV-1s and VariTranes

Monitor Reg # / Inst. #	Control Reg # / Inst. #	Older (VAV-1's) Usage	Newer VAV's (II-V) Usage	Ranges & Notes
30001 / 1		Zone Temp	Zone Temp	Deg F; Range Note 1
30002 / 2		Active Heating Setpoint	Active Heating Setpoint	Deg F; Range Note 1
30003 / 3		Active Cooling Setpoint	Active Cooling Setpoint	Deg F; Range Note 1
30004 / 4	40004 / 104	Occupied Heating Setpoint	Occupied Heating Setpoint	Deg F; Range Note 1
30005 / 5	40005 / 105	Occupied Cooling Setpoint	Occupied Cooling Setpoint	Deg F; Range Note 1
30006 / 6	40006 / 106	Unoccupied Heating Setpoint	Unoccupied Heating Setpoint	Deg F; Range Note 1
30007 / 7	40007 / 107	Unoccupied Cooling Setpoint	Unoccupied Cooling Setpoint	Deg F; Range Note 1
30008 / 8		Damper/Valve Position	Damper/Valve Position	Pct; Range Note 2
30009 / 9	40009/109	Maximum Flow (Box Size)	Maximum Flow (Box Size)	CFM; Range: Note 3
30010 / 10		Current Flow, CFM		CFM; Range Note 4
30011 / 11	40011 / 111	Maximum Heating Flow		CFM Flow; Note 2
30012 / 12	40012 / 112	Minimum Heating Flow		CFM Flow; Note 2
30013 / 13	40013 / 113	Maximum Cooling Flow	Minimum Air Flow	CFM Flow; Note 2
30014 / 14	40014 / 114	Minimum Cooling Flow	Maximum Air Flow	CFM Flow; Note 2
30015 / 15	40015 / 115	Fan Control Setpoint	Cooling Low Flow Limit	Deg F; Range Note 1
30016 / 16		AUX Temperature (Deg F)	Cooling High Flow Limit	Deg F / CFM Flow
30017 / 17		Recalibration	Heating Low Flow Limit	CFM Flow; Note 2
30018 / 18			Heating Offset	Deg F; Range Note 1
30019 / 19			Occupied OA Min Flow	CFM Flow; Note 2
30020 / 20			Unoccupied OA Min Flow	CFM Flow; Note 2
30021 / 21			Aux Temperature	Deg F; Range Note 1
30022 / 22			Present Cooling Flow	CFM Flow; Note 2
30023 / 23			Current Minimum Flow	CFM Flow; Note 2
10001 / 301		Fan Status/Ctl	Fan Status/Ctl	0=Off; 1= On
10002 / 302		Control Mode Status/Ctl	Control Mode Status/Ctl	0=Cool; 1= Heat
10003 / 303		Heating Status/Ctl	Heating Status/Ctl	0=Off; 1= On
10010 / 310	10 / 410	Damper Forced Open	Damper Forced Open	0=Normal; 1= Forced
10011 / 311	11 / 411	Damper Forced Closed	Damper Forced Closed	0=Normal; 1= Forced
10012 / 312	12 / 412	OCC/UNOCC Mode Control	OCC/UNOCC Mode Control	0 = OCC; 1 = UNOCC
10013 / 313	13 / 413	Local Setpoint Control	Local Setpoint Control	0=Heat Off; 1=Heat ON

CENTAURUS PRIME

10014 / 314	14 / 414	Min. Setpoint Forced	Maximum Heating Forced	0=AUTO; 1=FORCED
10015 / 315	15 / 415	Max. Setpoint Forced		0=AUTO; 1=FORCED
10016 / 316	16 / 416	TEMP/FLOW Mode		0=TEMP; 1=MODE
10017 / 317	17 / 417	Recalibration Mode (!)		0=AUTO; 1=FORCED

Range Note 1: This is a count value, 0 to 255, representing degrees F, in integer format. In the Modbus case, use Low-Range = 0, and High-Range = 255.

Range Note 2: Actually, the Trane equipment used percentage points, which are sent back as 0 to 100 counts representing 0 to 100 percent, in integer format, of the VAV box's maximum flow rate. This is then translated to CFM (cubic feet per minute), given the scale associated with the box (see AI/AO #9, the CFM maximum of the box, commonly called the "box size). In the Modbus case, use Low-Range = 0, and High-Range = maximum box size.

In the first two columns, the first part is the Modbus Register number. The second part is the BACnet object instance number.

Index

- (A)larms, 15, 16**
- (C)ontrol, 13, 14, 22, 24**
- (C)ontrolled, 15, 16**
- (D)etail, 17, 18, 19, 20, 21, 22, 24, 25**
- (D)evices, 15**
- (H)elp, 13**
- (M)odbus, 26, 27**
- (S)elect, 17, 18, 19, 20, 21, 22, 24, 25**
- (V)erbose, 26**
- “Devices” Menu Options, 16**
- “Point” Menu Options, 18**
- “Summary” Menu Options, 15**
- 220 or 240 Volts AC, 1**
- Auto Discovery, 13**
- BAUD.TXT, i, 10**
- Commissioning, 10**
- communication statistics, 17**
- Creating and Downloading the GATEWAY.INI file, 10**
- CS485, i, 4, 5**
- Database Generation, 13**
- Downloading, i, 10, 12, 14, 27**
- Gateway Overview, 9**
- Jumpers, 5, 6, 7**
- Local Mode, 13**
- Memory, 2**
- Modbus device numbers, 15**
- Modbus Master, i, 4, 8**
- Modbus Network, 1**
- Modbus Point Mapping, 31**
- Modbus RTU, 1, 27**
- Power, 3**
- Power Supply, 1**
- Processor, 2**
- Range Note 1, 32**
- Receive File, 29**
- RS232, 5, 7**
- RS-232, 1, 2, 4, 5**
- RS485, i, 5, 6**
- Send File, 27**
- Serial Port, 2**
- Setting up the BACnet System, 30**
- Setting up the Modbus Driver, 29**
- Smart II Device Buss, 1**
- SOCKET.CFG, 12**
- targeted device, 18**
- Uploading, i, 10, 14, 27**
- Watch, i, 13, 25**